

BACKUP FACILITY – Subscription Service

What is it?

All the information entered into the software with regards to a business get stored in a database which is created during setup or manually. As the business grows the database grows and it becomes the “BLUE PRINT” of the business.

SHOULD THE DATABASE BE LOST, ALL THE INFORMATION WITH REGARDS TO THE BUSINESS IS LOST AS WELL. This can close a business down due to down time and loss of income.

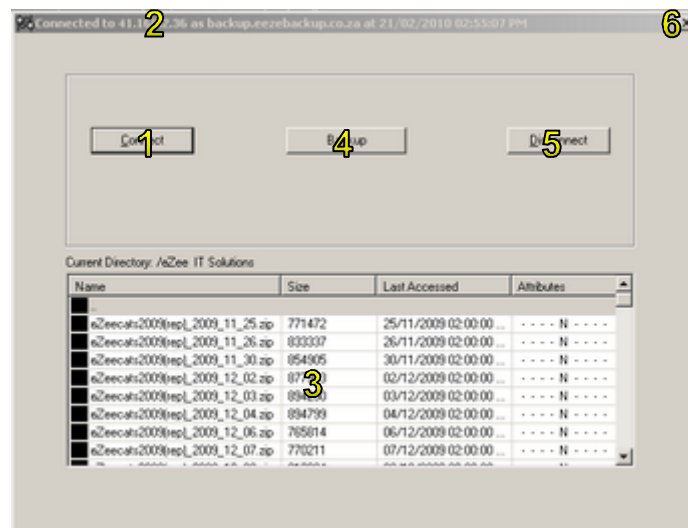
In the event that you loose your database through corruption, machine theft, a virus attack etc. your last backup can be restored and you will be back up and running!!

How does it Work?

Data is backed up via an internet link to Global Continuity SA's Information Silo whenever you press the “online backup” button. Depending on your internet connection speed and the size of your database, this backup should take anything from a few seconds to a few minutes.

Upto 10 versions of your backup can be secured. eZee can retrieve your last version or any or any previously stored version on demand from the Service on your behalf.

Click on the “Backup” button in the software’s main screen.



1 Make sure you are connected to the internet and click the “Connect” button.

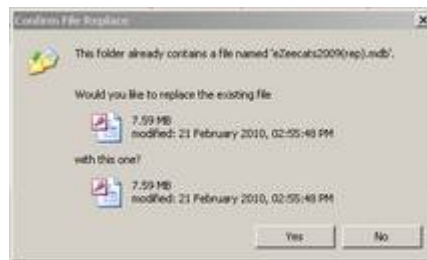




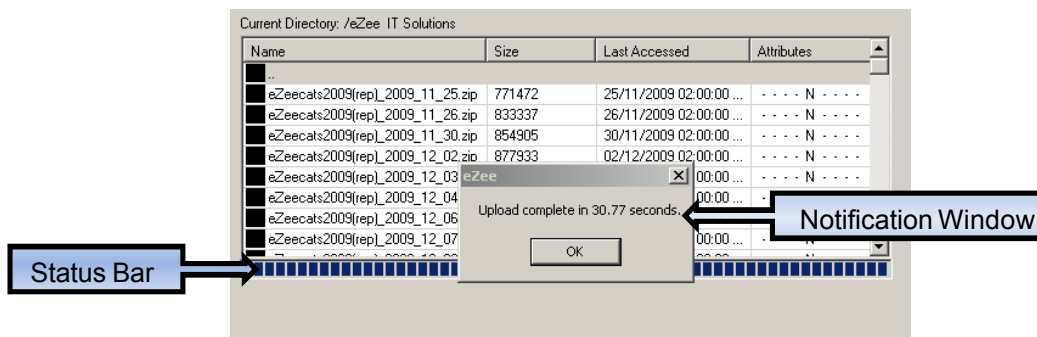
- 2 As soon as the connection to the server is established, you will see it here.



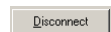
- 3 In this window you will see a list of your previous backups. If it is your first backup the software will create a folder according to the company name specified in the software settings.
- 4 Click on "Backup". The backup procedure will start and the following screen will appear. Click on "Yes" to create your new backup file.



The backup will now run and the status will be indicated by a status bar. When the procedure is complete a notification will show that the upload was completed. Click on "OK".



- 4 "Disconnect" from the server by clicking this button.



- 5 Exit here from the backup facility.

